

hatch  
exhibits





## OUR APPROACH IS SIMPLE

## IT'S ALL ABOUT YOU

Hatch Exhibits is founded on the belief that high quality fabrication, innovative design and personalized attention can be cost-effective and efficient. Our goal is to create visually impactful custom exhibits and event environments that maximize YOUR unique presence and communicate your brand to your target audience.



### CUSTOM FABRICATION

Experienced fabricators and cost-effective digital manufacturing processes allow us to turn YOUR vision into an impactful display while still meeting budget constraints.



### ONLINE INVENTORY MANAGEMENT

YOUR inventory is accessible 24/7/365 via our online system which includes real-time inventory, resource database, inventory photos, custom reporting metrics, event scheduling and online ordering.



### EVENT PRODUCTION

For festivals, ceremonies, sales meeting and other corporate events, our dedicated project management team will work with you to create and develop the scenic, audio/visual and lighting needs for YOUR large-scale audience.



### RENTAL & MODULAR SOLUTIONS

A comprehensive inventory of rental exhibits and components is available for YOUR customization. Rental and modular options allow you the benefit of a tailored presence without the expense of traditional ownership.



### INTERNATIONAL CAPABILITIES

With partners located across the globe, we can work with YOUR team to provide consistent branding and messaging as well as a one-stop-shop for your international exhibiting needs.



### PROGRAM MANAGEMENT

Let us worry about those show forms for you. Our team can handle YOUR pre-show management, transportation, onsite supervision, installation and dismantle, show services, budget management and aid in strategic planning.

## GRAPHIC PRODUCTION & PRINT SERVICES

Our full-service print department delivers quality solutions for fabrics, rigid, popup, backlit and SEG graphics. The team is available to review and edit artwork files as needed; full graphic design is available upon request. Graphic layouts are included at no charge for each of YOUR projects; both electronic and hard copy proofs are available if needed.



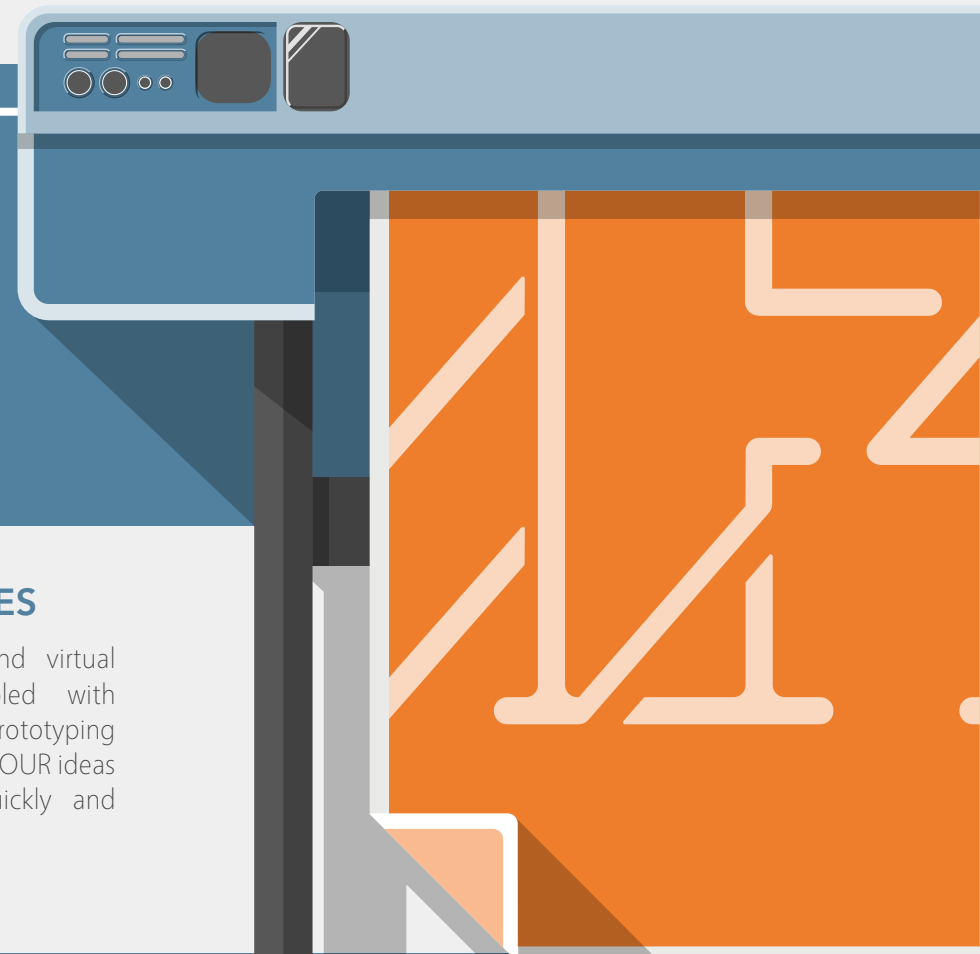
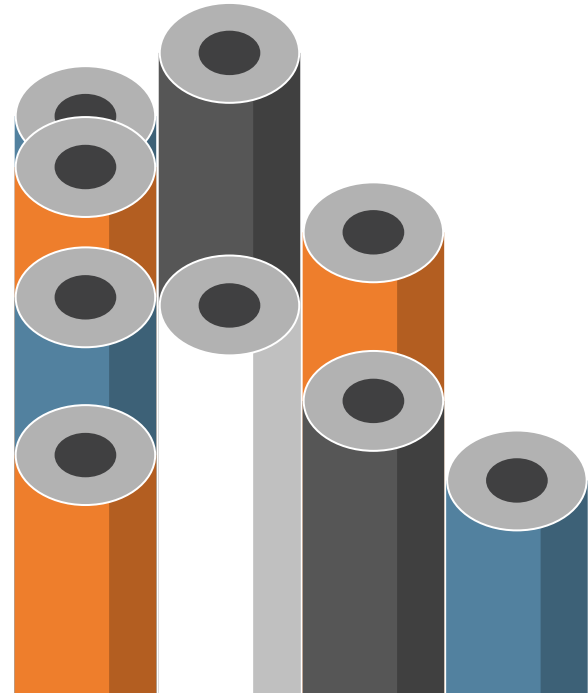
### INTERACTIVE DESIGN

One of the best ways to engage YOUR audience is through interactive experience. We merge user experience, interface development and graphic design with specialized coding to create a meaningful experience for your users across various digital platforms.



### CREATIVE SERVICES

State-of-the-art design and virtual visualization tools coupled with cutting-edge rapid prototyping equipment allow us to turn YOUR ideas into actionable concepts quickly and creatively.







# PROGRAM MANAGEMENT

Many exhibitors struggle to find time for strategic planning, reviewing show schedules, booth sizes, show attendance and ROI to see if their current exhibit plan is really working for them. We're here to help! From schedule reviews and annual budget preparation to in-booth surveys and custom lead-retrieval, we have the tools to help you measure your ROI and successfully plan for the year ahead.

Our dedicated account team can simplify YOUR exhibit marketing program by handling the logistics for you. From show service coordination and completion of show forms, to arranging transportation and installation/dismantle services, we are here as a resource for you.



## LEAVE THE PLANNING TO US

REPAIRS & MAINTENANCE

FULFILLMENT & PROMOTIONAL

INSTALLATION & DISMANTLE

ONSITE COORDINATION

SHOW SERVICE COORDINATION

SUBMISSION OF SHOW FORMS

ANNUAL BUDGET PREPARATION

ASSET MANAGEMENT

WAREHOUSING & STORAGE

STRATEGIC PLANNING

Our 25,000+ square foot facility includes full storage capabilities as well as production and office space. The climate-controlled space offers 20'+ ceilings to allow crates to be stacked for optimal storage.

We realize that no single exhibitor has the same needs as another. While some are looking for a complete turnkey solution for all exhibit needs, others may be struggling with warehousing and simply need a partner to store and ship the properties, or a trusted supplier to provide updated graphics or portable displays. You should have the opportunity to determine which services you want, and which you don't. With Hatch Exhibits, you choose which services work best for you and your organization.

Most importantly, we are committed to identifying what each customer is trying to achieve, and we are focused on finding individualized solutions to meet those goals.





# CREATIVE SERVICES

## DEFINING YOUR VISION

Whether you are looking for a completely new design or ways to update your exiting space; our design team can work with you to create an environment that is tailored to your message, audience and budget. A collaborative discussion between YOUR team and Hatch allows the design staff to hear your struggles, focus and vision for the project to ensure that we provide designs that meet your goals and fall within your budget requirements.

With capabilities for both 2D and 3D design support, as well as structural engineering, we've got you covered.



### 3D MODELING DESIGN

Do you have a vision in your head but need help putting it on paper? Are the days counting down to that dreaded deadline and all you have are scribbles and doodles? In either case our creative team of designers and engineers want to jump right in and work with you creating the results you need to breathe easy and crush that deadline like a boss!



### PHOTOREALISTIC RENDERING

Let's face it, that box of crayons and dried up markers are not going to impress anyone. When you need to impress Hatch has your back. We utilize the same software utilized by Hollywood and entertainment professionals for 3D modeling and rendering to create stunning presentations that closely mimic the final product.



### ENGINEERING

When it's time to roll up our sleeves and start building we don't start without putting a serious amount of grey matter on paper! Have you ever experienced the disappointment of having a project go thru production and come out with results different than expected? At Hatch we will ensure you know exactly what to expect.



### INFOGRAPHICS

All of your stats are the product of sweat and tears - your projections are dreams being realized. There's no better way to short-sell all your hard work than a spreadsheet. Let Hatch's award-winning designers extrapolate your Excel docs and creatively crunch your numbers.



### BRAND IDENTITY

So, you have a logo, a name, and a tagline... now what? You're not the first to ask that question. Brand identity is all about establishing consistency in branding. Hatch is here to help you do so stylishly and set you on the path to universal brand-recognition (nirvana.)



### LANDING PAGE DESIGN

Let Hatch design a custom landing page or splash screen for your next conference. When used in tandem with linked-signage, track user-data and site-traffic to further analyze ROI.

## EXHIBIT GRAPHICS

State-of-the-art design and virtual visualization tools coupled with cutting-edge rapid prototyping equipment allow us to turn YOUR ideas into actionable concepts quickly and effectively.

## ADDITIONAL SERVICES

- ⚙ A|V & Multimedia Solutions
- ⚙ Experiential Marketing
- ⚙ Model Making
- ⚙ Fulfillment & Promotional
- ⚙ Digital Print Production
- ⚙ Rapid Prototyping
- ⚙ Interactive Technologies
- ⚙ Custom Illustration

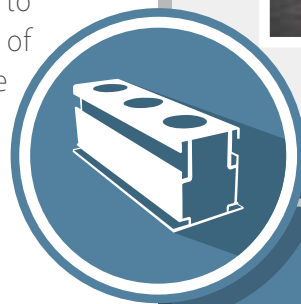






# RENTAL & MODULAR SYSTEMS

Maybe your program has one unique show that could benefit from a few strategic rental components or maybe your company just isn't ready for the full investment of owning a custom trade show exhibit. We have the inventory and creativity to design a custom rental exhibit to meet YOUR needs. Hatch also offers a full line of modular and portable solutions which are great for converting exhibit components into multiple configurations.



## BENEFITS OF MODULAR AND RENTAL EXHIBITS :

- Durable 100% aluminum construction
- Complete system with full assortment of frame shapes and sizes
- Easy to assemble = lower labor costs
- Supports both fabric and rigid graphics
- Ideal for trade shows, events and retail spaces
- Easily modified to accommodate new messaging and graphics
- Lower or no storage costs
- Decreased shipping and transportation costs



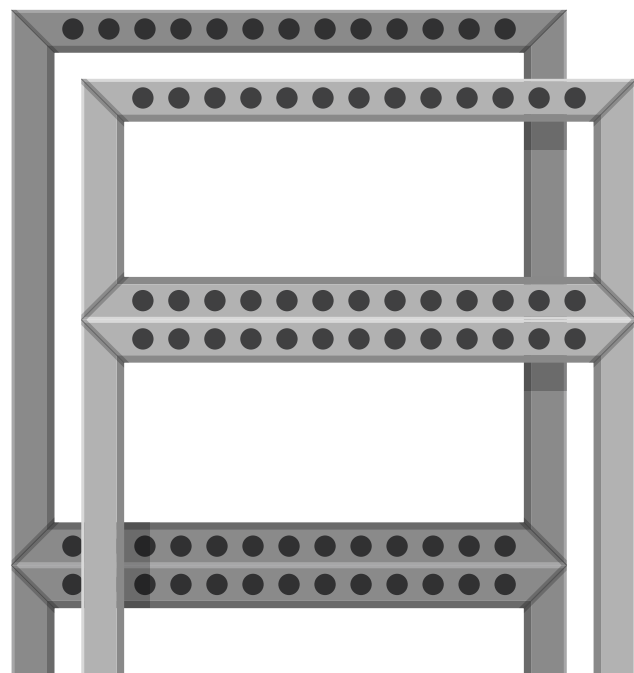
### DECREASED WEIGHT

Reducing overall weight allows for lower material handling (drayage) costs.



### FLEXIBILITY

Can be combined with other extrusion systems for more flexibility and design options.



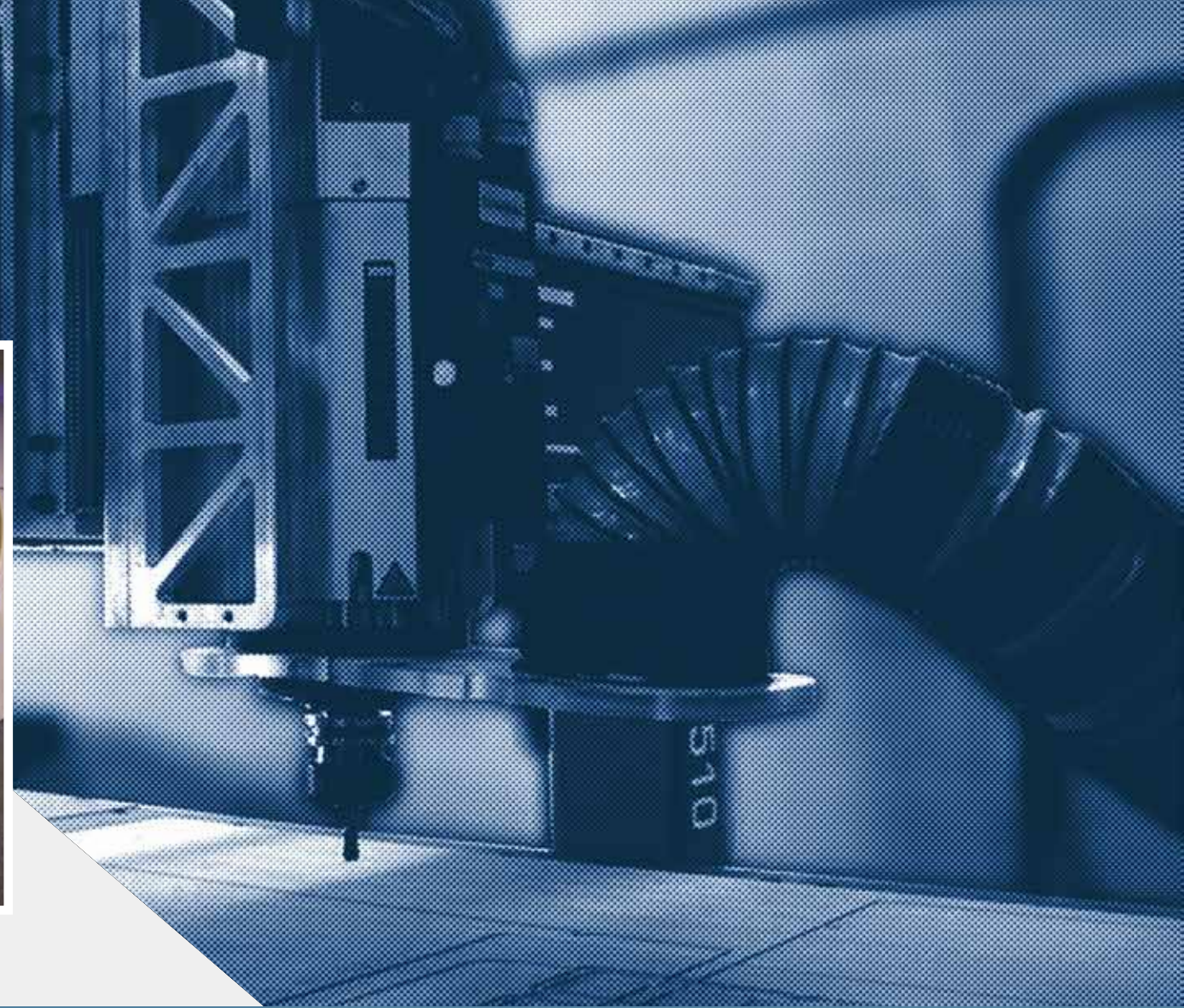




# CUSTOM FABRICATION

Creativity doesn't stop at design; our fabricators are always up for a challenge. We utilize the latest CAD and CNC software and a multitude of construction disciplines to fabricate the highest quality millwork and exhibit components. The Hatch team of highly skilled craftsmen work to deliver the look you envision, for the price you need.

Our outstanding safety record and our commitment to sustainable business practices reflect the dedication and quality that has become a staple of every client project. The flexibility of our digital manufacturing processes enables us to produce YOUR designs at the cost, quality and quantity you require.

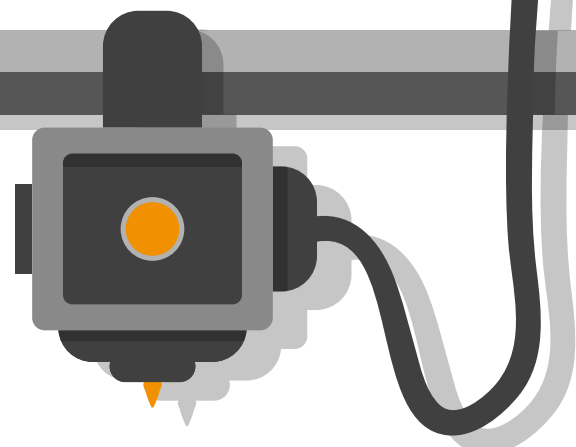
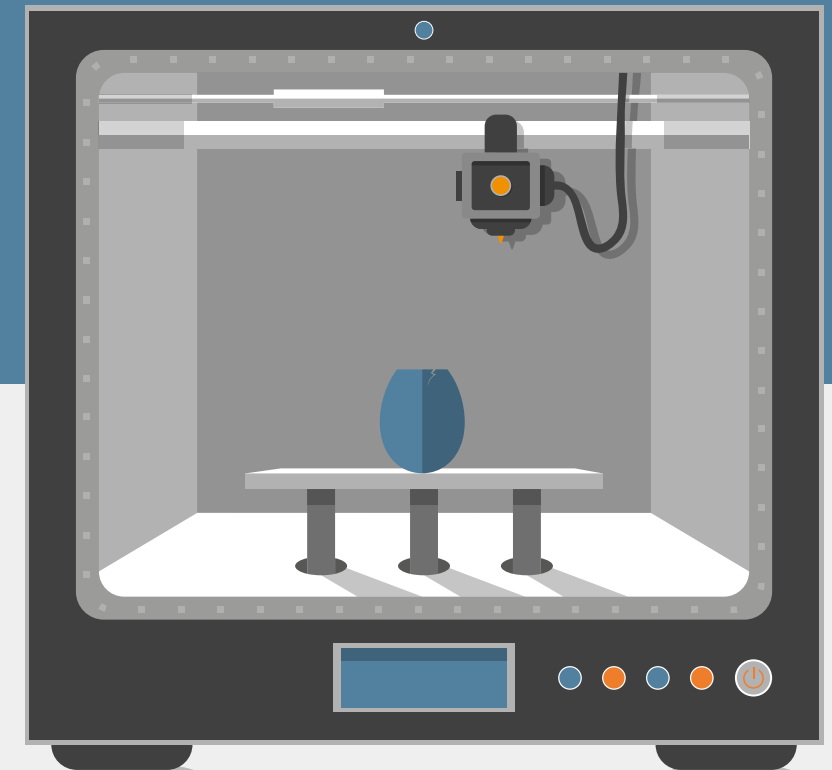


## CAPABILITIES

- 6' x 10' CNC Router
- Digital Manufacturing
- Custom Finishing
- Millwork
- Digital Print Production
- Rapid Prototyping
- Custom Crating
- Edge Banding
- Laser Cutting and Engraving

The world of "custom" has changed dramatically in the last 5 years. In the past, the industry lacked a truly cost-effective way to rapidly create functional products from scratch. Fortunately for exhibitors, technology has managed to catch up and (in some cases) surpass our wildest expectations.

The addition of 3D printing technology means truly custom builds, decreased lead times, and savings for consumers. Working in conjunction with Hatch's modular booth options, the possibilities are endless.







# GRAPHIC PRODUCTION & PRINT SERVICES

Our innovative production team can assist in the design, production, and release of printed materials for YOUR exhibit or event. They work closely with the graphic design team to set production timelines, produce printed materials, adjust color settings and provide test prints.

The Hatch in-house production facility includes an array of technologies to support any client's needs.



## DURABLE PRINTS

UV inks offer unparalleled scratch and chemical resistance and up to 150% flexibility. Additionally, they offer the ability to produce a diverse range of prints for both indoor and outdoor use.



## LARGE FORMAT HIGH RESOLUTION

In our brand new in-house print facility, we're able to print up to 8' x 4' rigid media and 60" roll media. All of our printers allow for "super-resolution" 1200 DPI printing for the ultimate in image quality.



## SPECIALTY TECHNIQUES & APPLICATIONS

We offer a number of specialty applications such as backlit displays and signage, signs and posters, interior décor, glass and metal decorative panels and the ability to print on pre-cut and irregularly-shaped materials. We also offer a matte and gloss technique to give your graphics textural pop



## THE FUTURE OF DIRECT-TO-MEDIA PRINTING

With the advancements in print technology, images can be printed directly onto rigid media up to 50mm (1.9685") thick, providing great versatility and a wider range of potential applications.



## WHITE, PRIMER, & INK

Add White ink to print onto clear acrylic to create backlit panels or to print on wood, metal, or non-white surfaces. Primer helps the ink adhere to surfaces such as glass. Clear ink adds 'pop' and protection to finish a piece.



## VARIABLE DOT PRINTING

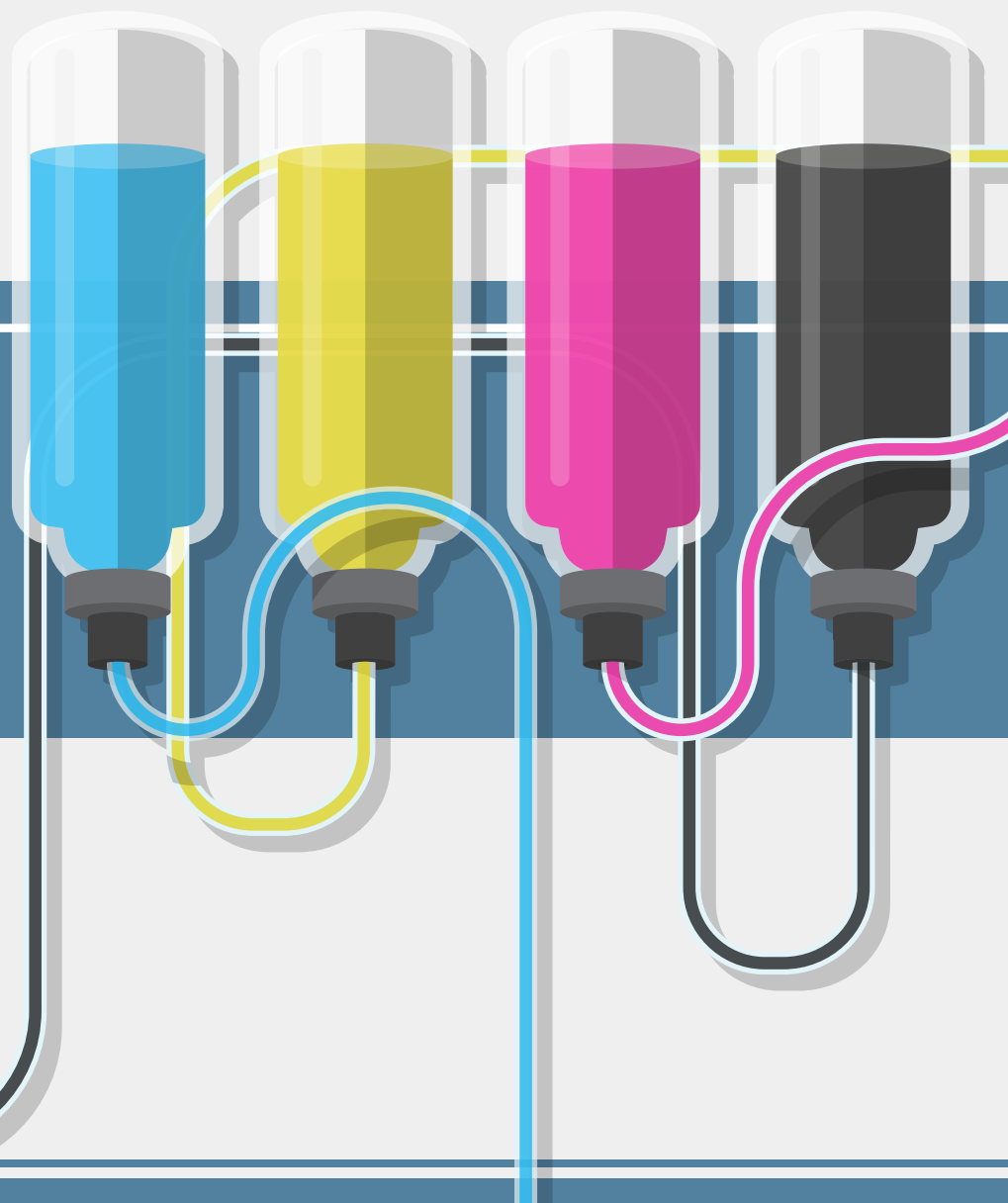
Variable dot printing and the newly developed Advanced Pass system deliver smooth gradients and ensures precise and accurate print quality throughout the printing process, greatly reducing the appearance of banding and resulting in a smoother image.

## ADDITIONAL SERVICES

- ACRYLIC
- EPVC
- FOAMCORE
- GATORBOARD

- FABRIC
- VINYL
- WOOD
- LAMINATE

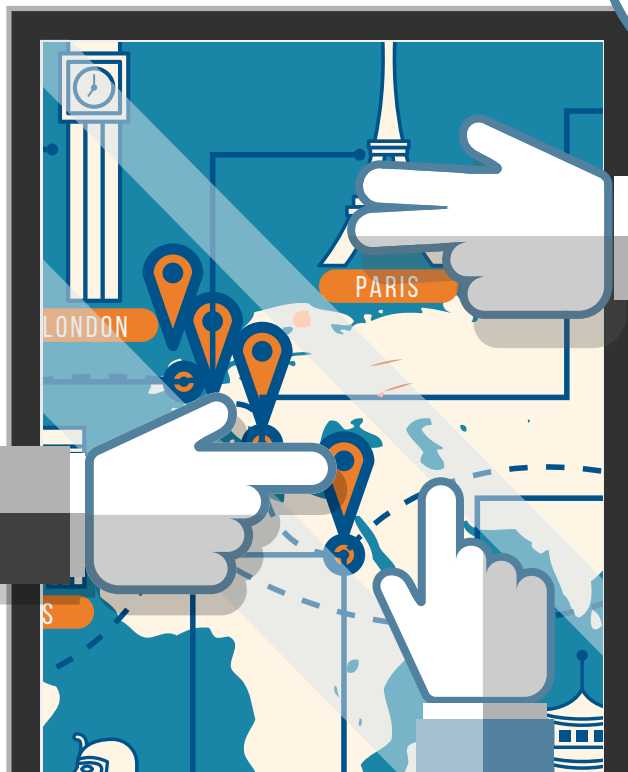
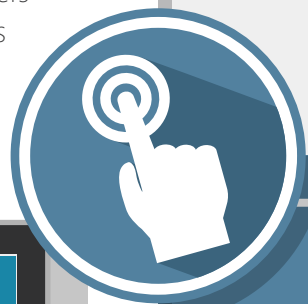
- MDF
- ADHESIVE FLOOR VINYL
- GLASS
- PAPER





# INTERACTIVE DESIGN

Thanks to the emergence of digital interactive consumer products, there are now many ways to introduce immersive interactive experiences into YOUR event or exhibit space. Until now, these customized interactive technologies have proven to be too expensive to fit most exhibitor's budget restraints, and were reserved for those willing to spend tens, if not hundreds, of thousands of dollars. Not anymore. Hatch offers three (3) customizable interactive packages design to fit your budget and increase your experimental marketing initiative.



## MULTIPLE-SCREEN WALL DISPLAY

Target multi-screen arrays as if they were a single display. Monetize that unused wall space in your retail or exhibit environment. Life-sized, engaging, one-of-a-kind interactive experiences are now attainable, regardless of business size. The size and orientation options are limitless.



## KIOSKS

Our interactive experiences are compatible with all screen orientations and resolutions - landscape or portrait, wall, table or freestanding mounts. 4K UHD? We can handle it. Kiosk displays have long been the industry standard for exhibits and tradeshows. Hatch's interactive packages allow the client to choose whether their individual displays work independently or in tandem.



## TABLETS

Available on all popular platforms. Take it with you or create permanent installations. No question, tablets and portable devices have become staples in the daily lives of millions. Give the people what they want - a handheld interactive brand experience.



TRADESHOW EXHIBITS



MUSEUM EXHIBITS



RETAIL SHOWCASE



DIGITAL SIGNAGE



TELEVISION BROADCAST



ACADEMIC APPLICATION

The use of the pioneering interactive software, allows Hatch Exhibits to offer affordable and accessible interactive experiences. In the past, custom interactive builds were reserved for big-budget clientele - often costing upwards of \$50,000. Not anymore. Hatch Exhibits offers affordable, completely custom, interactivity for ALL budgets. We offer packages geared toward the specific end uses of our clients.

LG webOS

chrome

Windows 8

TIZEN

iPad





# ONLINE INVENTORY MANAGEMENT

Our online inventory management system delivers on-demand, 24/7 web-based event and project management technology for event and marketing managers and trade show professionals. User-friendly and easy to deploy, this system streamlines workflow processes on a Cloud platform, with no tradeshow software required. Not only does the system facilitate global collaboration with all team members, 24/7/365, this flexible online application can simplify and support the efforts of YOUR marketing team. The online system can include categorized inventories for separate production divisions, graphics, giveaways, apparel, modular booth and accessories, technology components.



LEAD CAPTURE



BARCODING SERVICES



MARKETING TECHNIQUES



DOCUMENT LIBRARY



CUSTOM REPORTS



EVENT MANAGEMENT



DIGITAL ASSET MANAGEMENT

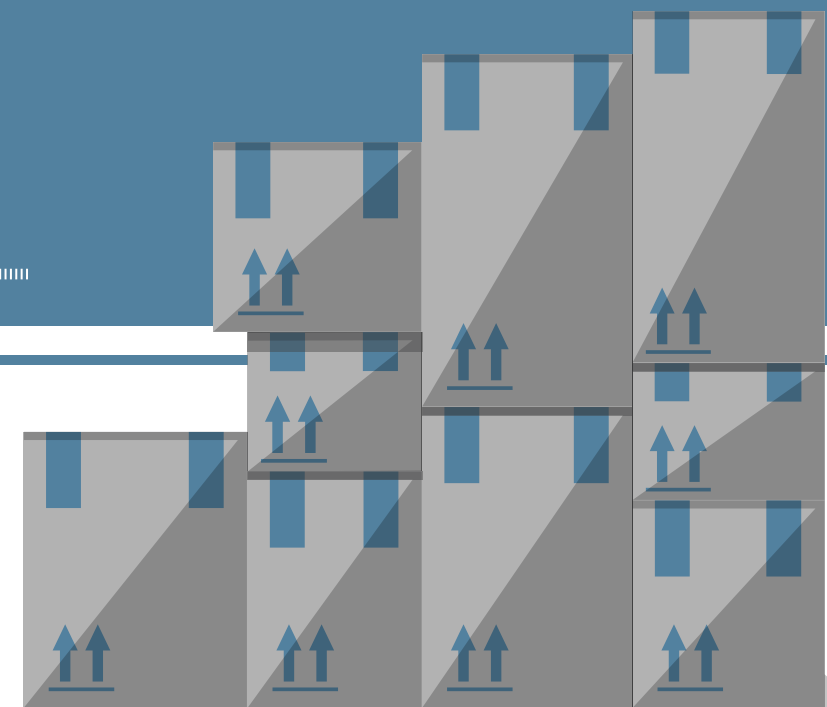


HUMAN RESOURCES



SALES TRACKING

Physical resource management drives pre-show execution. Have your inventory and freight details on your dash at all times. Manage orders, shipping, vendors, crates, and supplies from a single platform that updates in real-time. A robust fulfillment system automates re-order requests and tracks product levels based on up-to-the-second shipping data.







# EVENT PRODUCTION

Exhibit design can often become the catalyst for similar designs for permanent installations and events. We are happy to work with you to create new designs or integrate booth designs into your upcoming sales meeting, launch event, corporate meeting, annual kickoff, festival or outdoor event. The Hatch project manager works closely with audio, video, lighting and scenic teams to integrate each aspect of the event design into a cohesive production that meets your budget and exceeds your expectations.



BUDGET PREPARATION



VENUE COORDINATION



AUDIO



VIDEO



LIGHTING



GRAPHICS



INSTALLATION & DISMANTLE



ONSITE SUPERVISION



PRINT MATERIALS



DESIGN



LAYOUTS



CATERING



SHIPPING



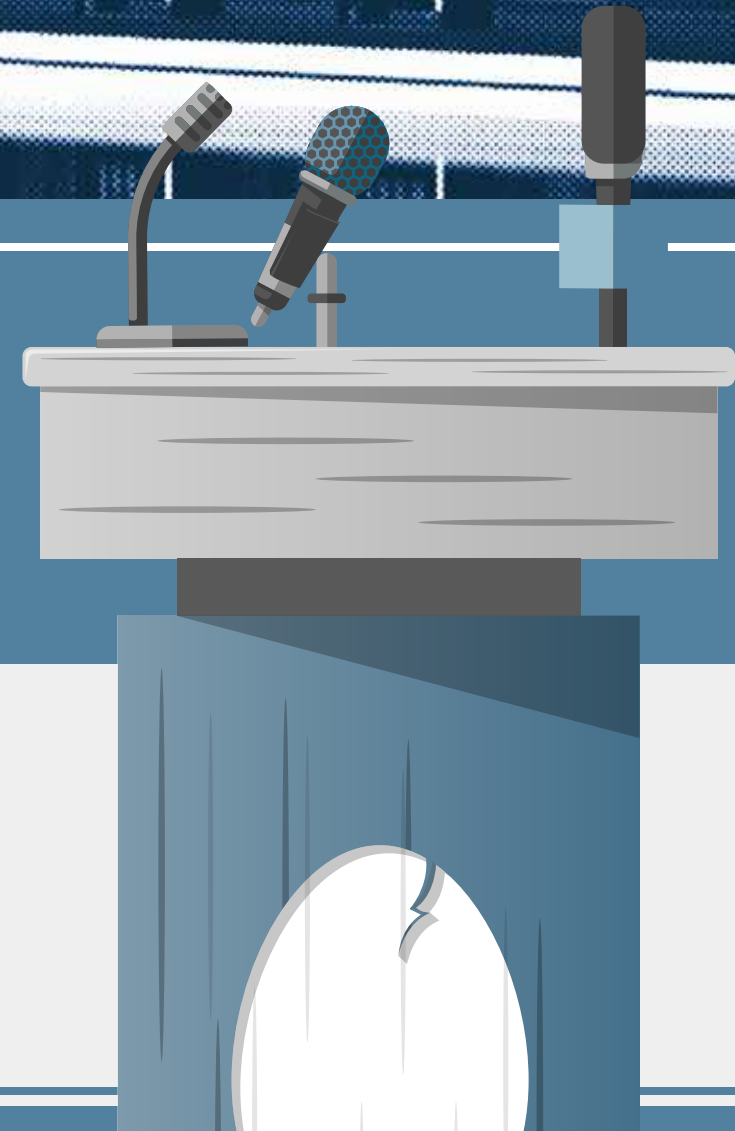
HOTEL ACCOMMODATIONS



PROMOTIONAL ITEMS



STAGES

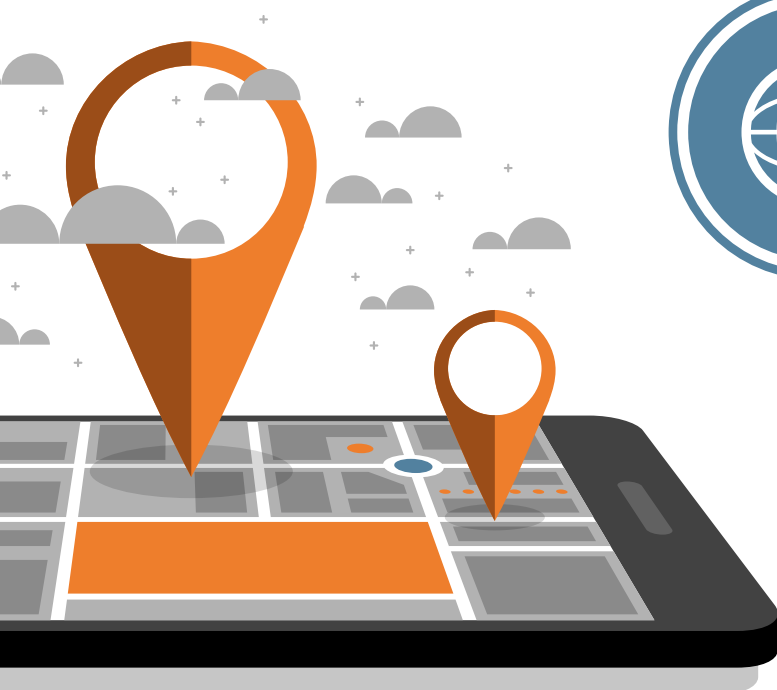






## INTERNATIONAL CAPABILITIES

Hatch works directly with partner locations in Germany, Japan, Turkey, UK and Czech Republic to provide cost-effective alternatives for our customers exhibiting internationally. These partners are an extension of the Hatch Exhibits team and provide custom exhibit design, fabrication and rental options as well as full turnkey event management, graphic production, installation and dismantle services, furniture, lighting truss, electric, audio/visual, coordination of pre-show and onsite services and promotional fulfillment services in countries and venues globally. Additional information about each partner is available upon request; some of the main locations supported are:



## INTERNATIONAL ONLINE INVENTORY ORDERING

The Exhibit Force online inventory management system is not only suitable for domestic events but for international support as well. Hatch Exhibits is currently working with partners in both the UK and Czech Republic to store and ship products that are ordered online for international events for one of our customers who has a strong presence in the EMEA and APAC regions.

The ordering process is identical from the client interface, but the inventory of items is listed as a separate division to make ordering as simple as possible. The Hatch team then works directly with the international partner to fulfill each order, confirm shipping and tracking information, and provide the same level of communication and support to our client as is customary for all domestic events.

International online ordering can be billed on the same monthly invoice as domestic events or billed separately by region or division.